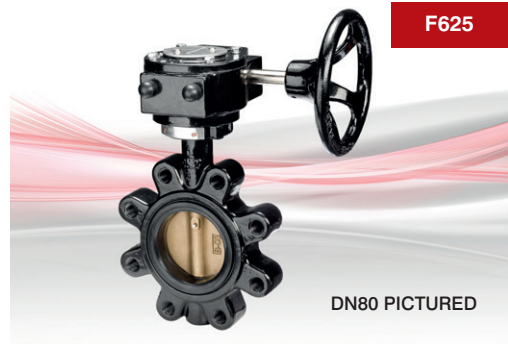


# F625

## Fully-Lugged Gearbox Operated Butterfly Valves



PN16



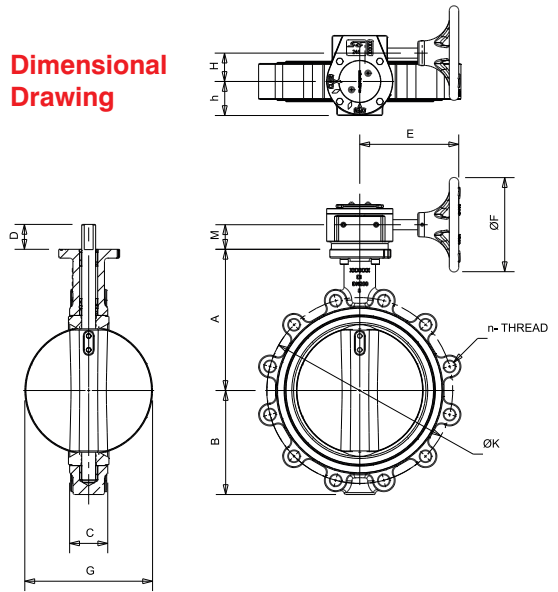
### Features & Benefits

- WRAS Approved for potable water applications -10°C to 80°C
- Robust, ductile iron valve body for long life service
- Valve body fully-lugged for secure installation
- The anti-blow out stem design provides a safe and secure operation
- Fully bonded epoxy paint system for superior corrosion resistance
- Suitable for applications where Level 3 C3 (Medium) corrosion protection is required
- Maintenance free valve design, reducing downtime
- Suitable for a wide temperature range -10°C to 100°C

### Materials

PART	MATERIAL
Body	Ductile Iron ASTM A536 (Epoxy Paint)
Disc	Aluminium Bronze
Liner	EPDM (WRAS Approved) Temp. -10 to 100°C (80°C WRAS)
Shaft	Stainless Steel Type 410
Taper Pin	Stainless Steel Type 316
O-Ring	Buna-N
Bushing	PTFE
Gearbox	Cast Iron

### Dimensional Drawing



### Pressure/Temperature Ratings

	F625
MAX TEMPERATURE (°C)	-10 to 100
PRESSURE (BAR)	16

Intermediate pressure ratings shall be determined by interpolation. WRAS approved -10 to 80 °C

### Dimensions & Weights

SIZE (mm)	GEARBOX OPERATED		A (mm)	B (mm)	C (mm)	D (mm)	E (mm)	F (mm)	G (mm)	H (mm)	h (mm)	M (mm)	Kv	N- THREAD
	WEIGHT (kg)													
50	8.3		109	72	43	32	157	150	52.9	45	54	39	98	4- M16x2.0
65	8.7		131.5	82	46	32	157	150	64.6	45	54	39	167	4- M16x2.0
80	9.7		134	90	46	32	157	150	79	45	54	39	258	8- M16x2.0
100	11.2		163	108	52	32	157	150	104.4	45	54	39	512	8- M16x2.0
125	13.9		169	125	56	32	157	150	123.5	45	54	39	872	8- M16x2.0
150	15.8		179	142	56	40	157	150	155.8	45	54	39	1,347	8- M20x2.5
200	23.0		224	165	60	40	238	150	202.7	45	54	39	2,675	12- M20x2.5
250	44.9		264	215	68	40	238	300	250.7	63	81	41.5	4,555	12- M24x3.0
300	64.2		299	240	78	40	223.5	300	301.9	78	81	38.3	7,037	12- M24x3.0

\*Kv coefficient denotes valves in fully open position

**PRESSURE RATING:** PN16

**TEST PRESSURES:**

Shell: 24 Bar Seat: 17.6 Bar

**SPECIFICATION:** Gearbox operated epoxy coated Ductile Iron Body. Semi-lugged. Aluminium disc. EPDM liner. To suit flange connections BS EN 1092-2 PN16. Valves may be used for flow regulation. Valve design conforms to BS EN 593. Face to face conforms to BS EN 558.

**MEDIUM:**

Suitable for Group 2 liquids as defined by the Pressure Equipment Directive 2014/68/EU\* WRAS approved valves.